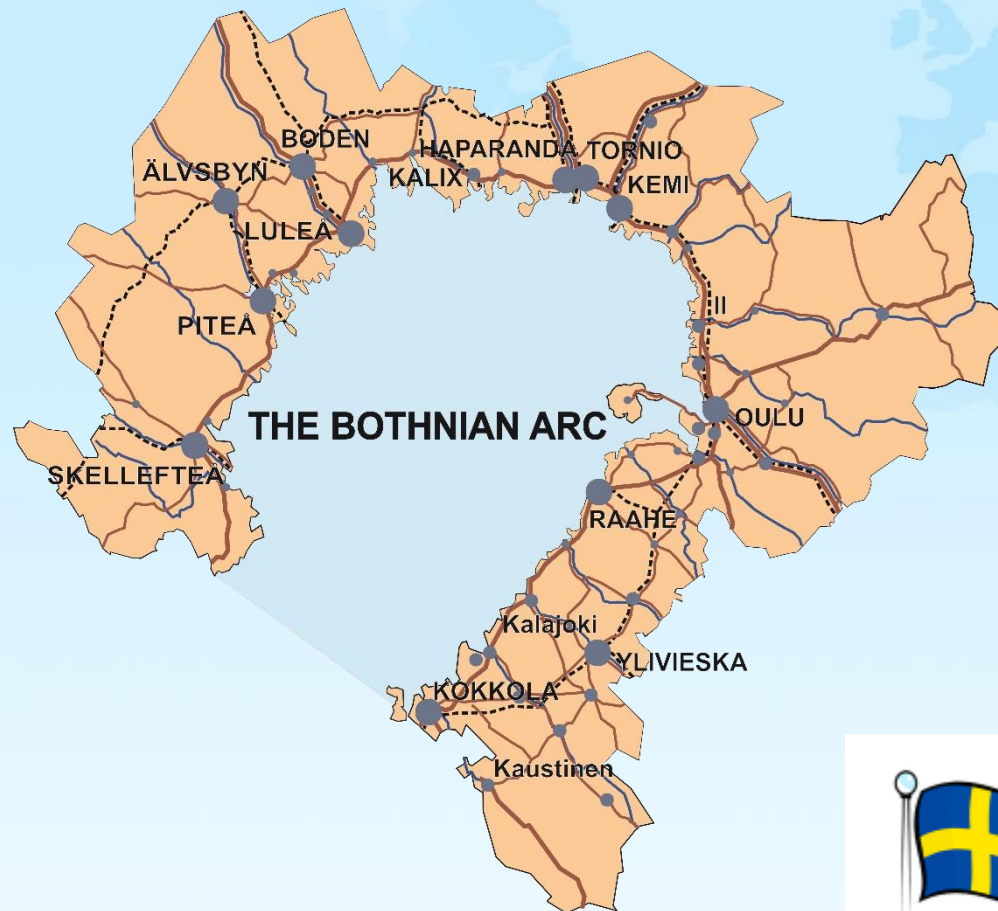


CROSS BORDER LABOR MARKET BOTHNIAN ARC



Together we are more

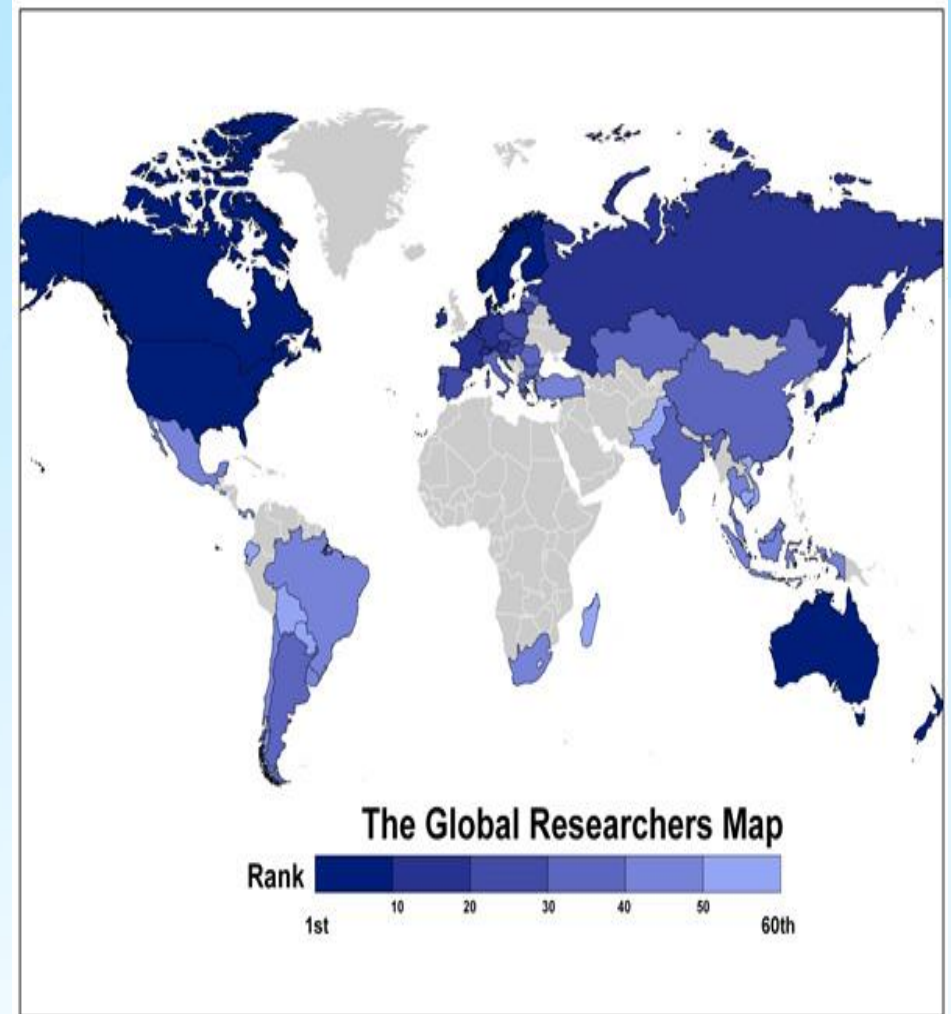
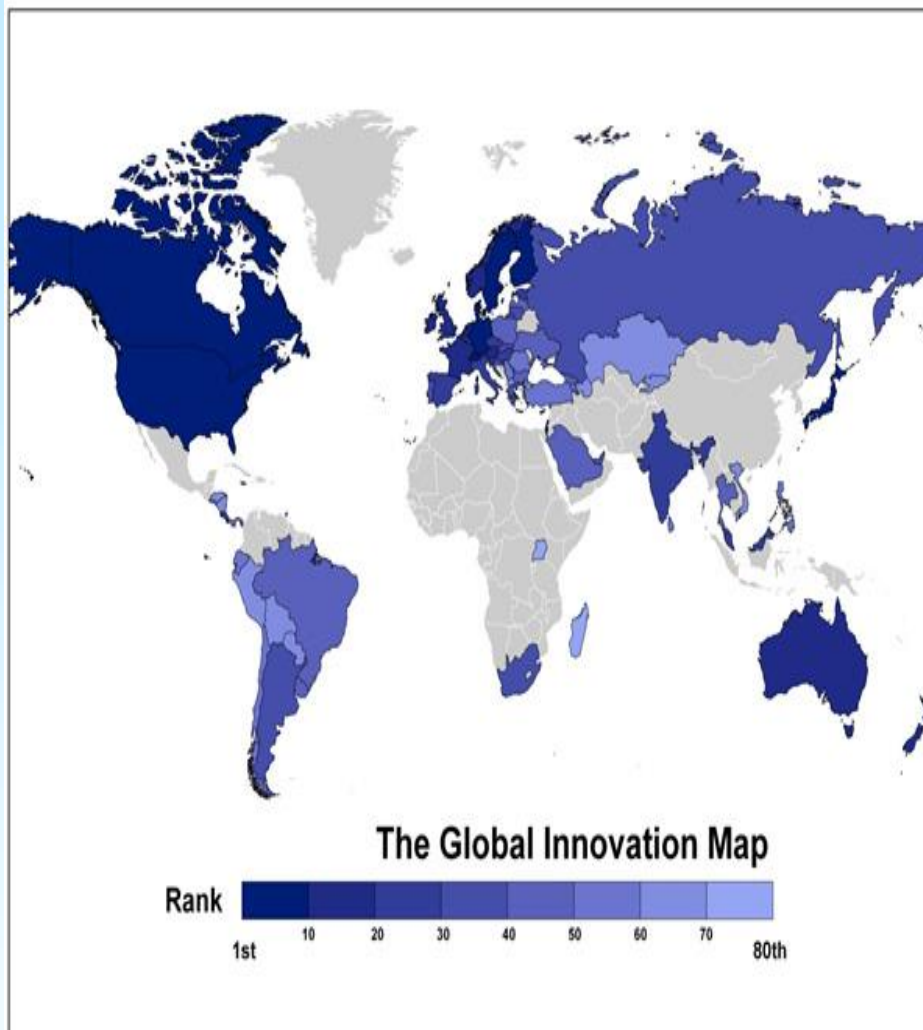
International Corridors



Together we are more

Global Innovation Potential

(source Richard Florida: The worlds leading nations for Innovation and Technology, 2011)



Nordic countries potentials

Nordic countries together:

- Top 10 economy in the world
- Fifth in Europe
- Covid-19 pandemic



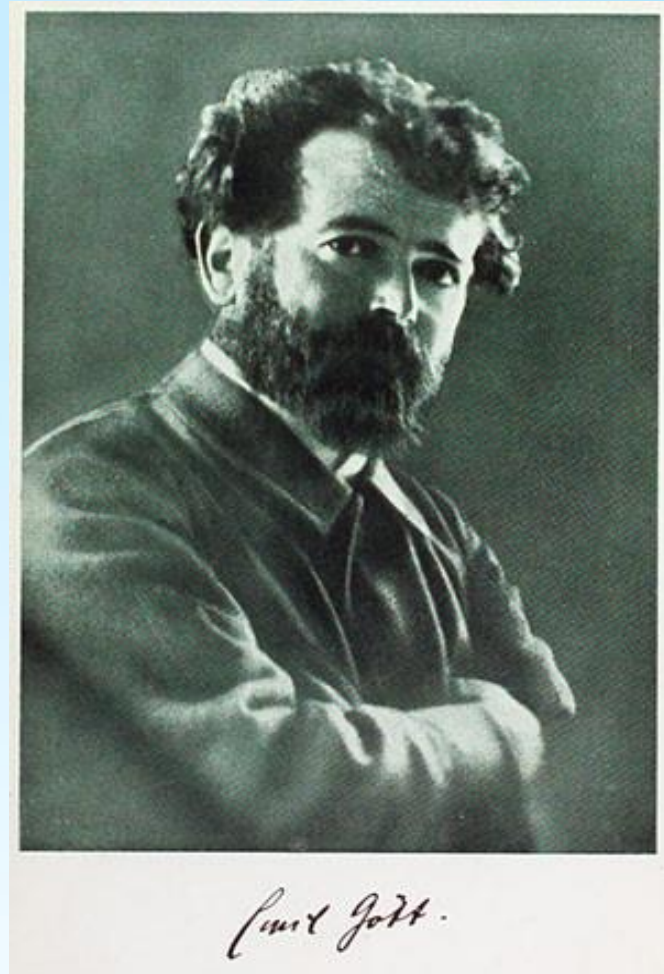
Together we are more



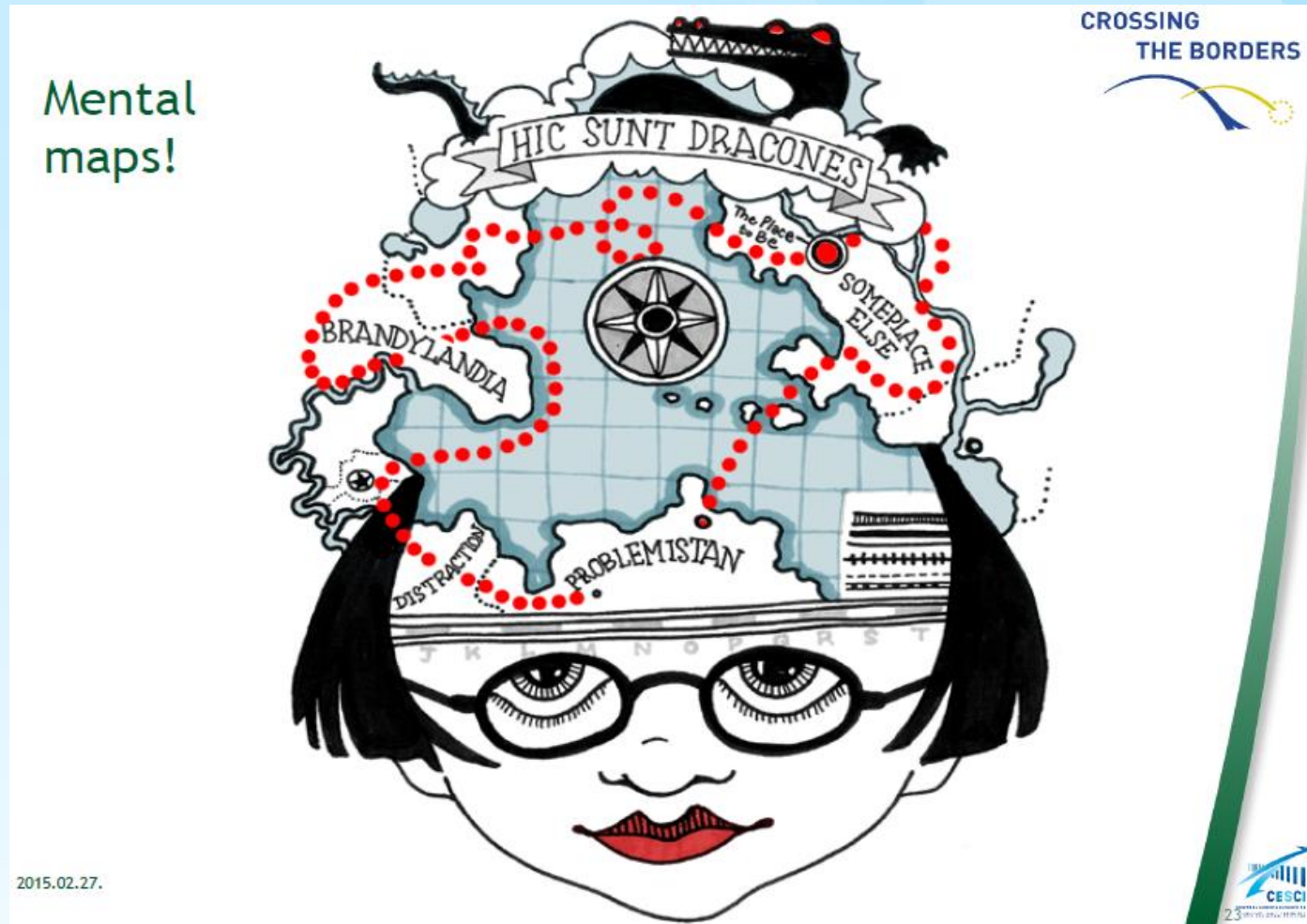
Emil Gött (1864-1908)

Sayings, Aphorisms

“Borders must not create the feeling that this is where you come to an end, but rather that this is where you still need to grow”.



Psychological Borders and Mental Maps



(Source: CESCI, Crossing the Borders Project, 2015)

Labor Force Mobility in Bothnian Arc

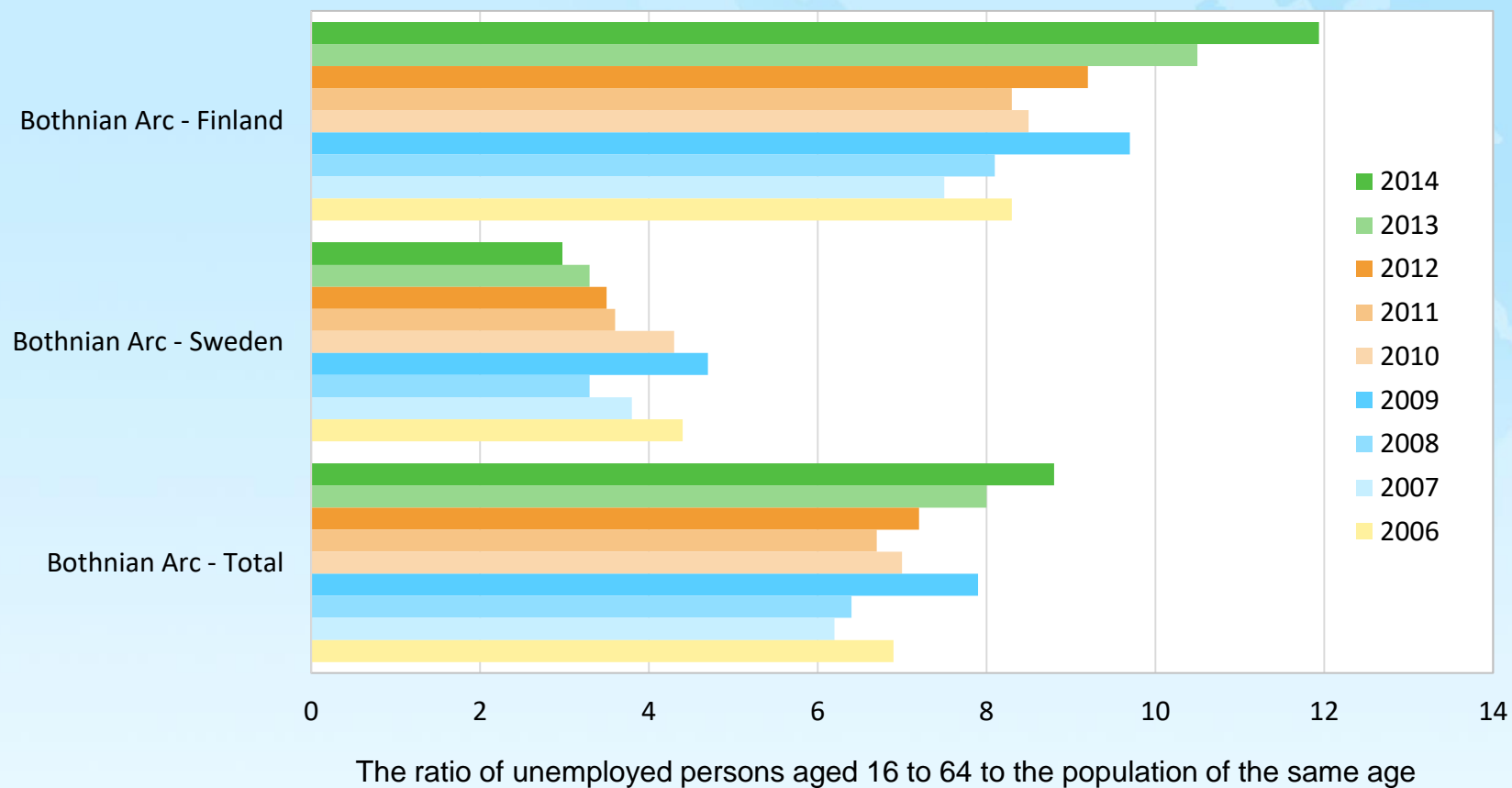
**How can we see the cross border region
as one big joint working region?**

**How cross border supply and demand of
labor force meets better?**



Together we are more

Unemployed persons, 2006–2014

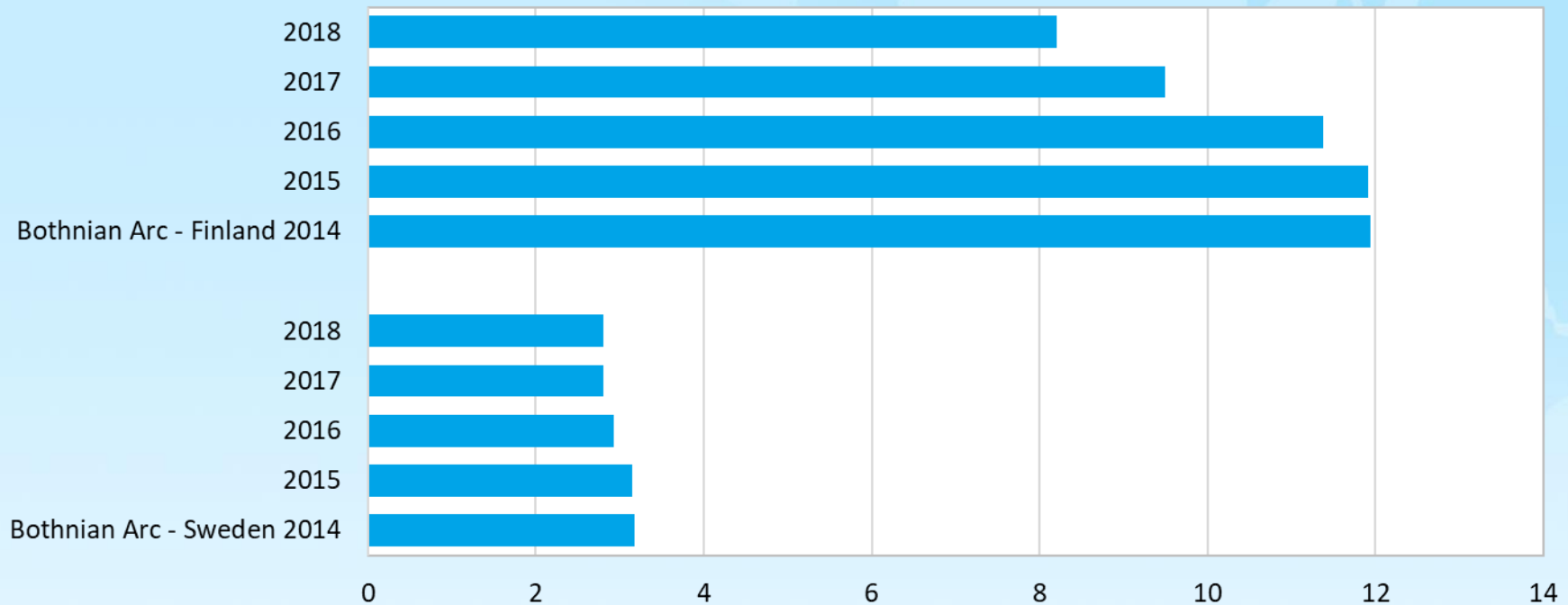


Source: Statistics Finland, Statistics Sweden



Together we are more

Unemployed persons, 2014–2018



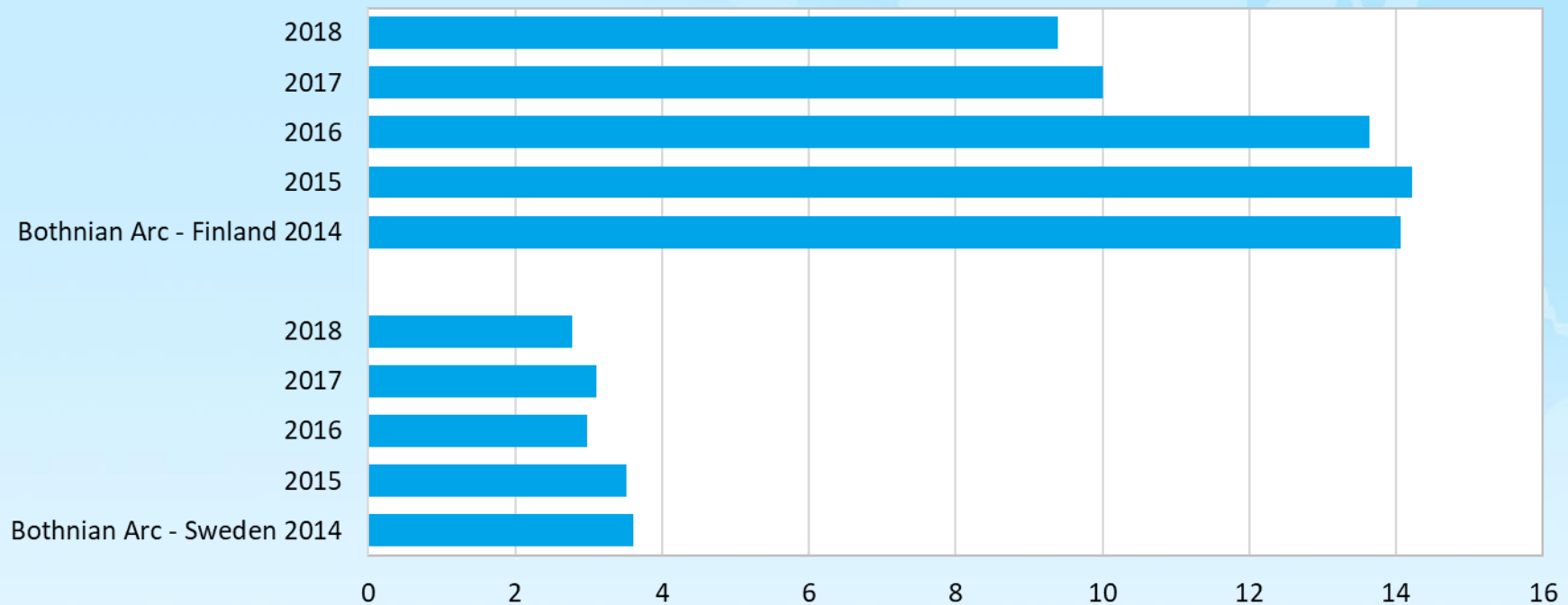
The ratio of unemployed persons aged 16 to 64 to the population of the same age

Source: Statistics Finland, Statistics Sweden, Arbetsförmedlingen



Together we are more

Unemployed persons, 2014–2018



The ratio of unemployed persons aged 18 to 24 to the population of the same age

Source: Statistics Finland, Statistics Sweden, Arbetsförmedlingen



Together we are more

Cross Border Labor Force Mobility

- High unemployment in Finland
- Labor shortage in Sweden
- In Sweden you don't search work force from Finland – WHY?
- In Finland you don't search workplace from Sweden – WHY?



Together we are more

Cross Border Labor Force Mobility

The most common obstacles (inquiry):

- language skills
- family
- social network
- can't find information
- no private service



Together we are more

Cross Border Labor Force Mobility



Obstacle helpdesk in Tornio: most common obstacles are;

- lack of information
- different competence to same kind of work
- unemployment-, health- and social insurance
- different regulations
- taxation, pension



Together we are more

Cross Border Labor Force Mobility

Obstacles in practise:

- wage differences
- slow bureaucracy
- no adequate services from the authorities
- short term contracts
- the costs of movement
- language differences
- information cannot be found or is not available



Together we are more

Recommendations

How can we see the CB region as one big joint working region?

How CB supply and demand of labor force meets better?

- more all kind of cooperation
- more services – external services
- more resources – external services
- more information – external services
- new (and better) attitude



Together we are more



BE OPEN MINDED

WOULD YOU TRUST THEM?

Microsoft®



FOUNDING TEAM 1978

8TH INTERNATIONAL LEADERS FORUM, HELSINKI, 11 NOVEMBER 2004



BothnianArc®

Together we are more

We all work together, that's the secret



**Oulun Kärpät Finnish National Ice
Hockey Champions**

**1981, 2004, 2005, 2007, 2008, 2014,
2015 and 2018**



Together we are more



Thank You!

Heikki Aalto
Bothnian Arc
CEO



Together we are more